

# UC-201 (ATH-UC-14): Consult the therapeutic links of a patient using a SAML token via the GetTherapeuticLink method - the SOAP version

- [Used documentation](#)
- [General information](#)
- [Basic flow](#)

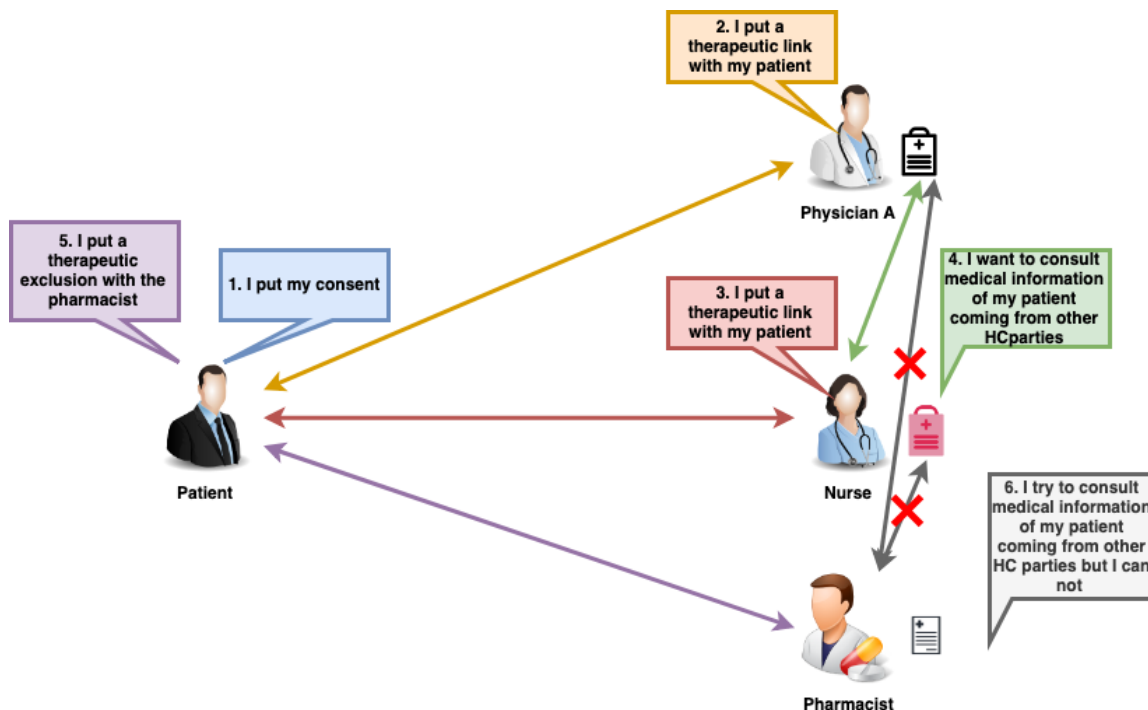
## Used documentation

Cookbook/ materials	Version	Location
Therapeutic Link Web Service	1.5	<a href="https://www.ehealth.fgov.be/ehealthplatform/fr/data/file/view/3399dfc3f0cb61fd23ece9aee958084544888395?name=therapeutic_link_ws_cookbook_1_5_dd_20170905.pdf">https://www.ehealth.fgov.be/ehealthplatform/fr/data/file/view/3399dfc3f0cb61fd23ece9aee958084544888395?name=therapeutic_link_ws_cookbook_1_5_dd_20170905.pdf</a>
Identity & Authorization Management (IAM) Token eXchange Technical specifications	1.0	<a href="https://www.ehealth.fgov.be/ehealthplatform/nl/data/file/view/83dd54fee269ec086696b0290d242907c6e9f994?name=IAM%20Connect%20Token%20eXchange%20-%20Tech%20Specs%20v1%20-%20004072018.pdf">https://www.ehealth.fgov.be/ehealthplatform/nl/data/file/view/83dd54fee269ec086696b0290d242907c6e9f994?name=IAM%20Connect%20Token%20eXchange%20-%20Tech%20Specs%20v1%20-%20004072018.pdf</a>
KMEHR	-	<a href="https://www.ehealth.fgov.be/standards/kmehr/en">https://www.ehealth.fgov.be/standards/kmehr/en</a>

## General information

In the figure below, we present a logical view about the relationship between the three basic services of the ehealth platform that are the WS Consent, the Therapeutic link WS, and the Therapeutic exclusion services. A Therapeutic link can be managed by the following end-users:

- Health Care Parties (HCP): a physician, nurse, dentist, midwife, a pharmacy (it is noteworthy that there is no difference between pharmacy and a pharmacist), authorized organization.
- Citizen: a patient, a parent of a patient, a mandatory



The Therapeutic Link Web service provides three methods (it is noteworthy that in this use case only the *GetTherapeuticLink* method is used):

- The "PutTherapeuticLink" method allows an end-user to declare a therapeutic link.
- The "RevokeTherapeuticLink" method enables an end-user to revoke a therapeutic link.

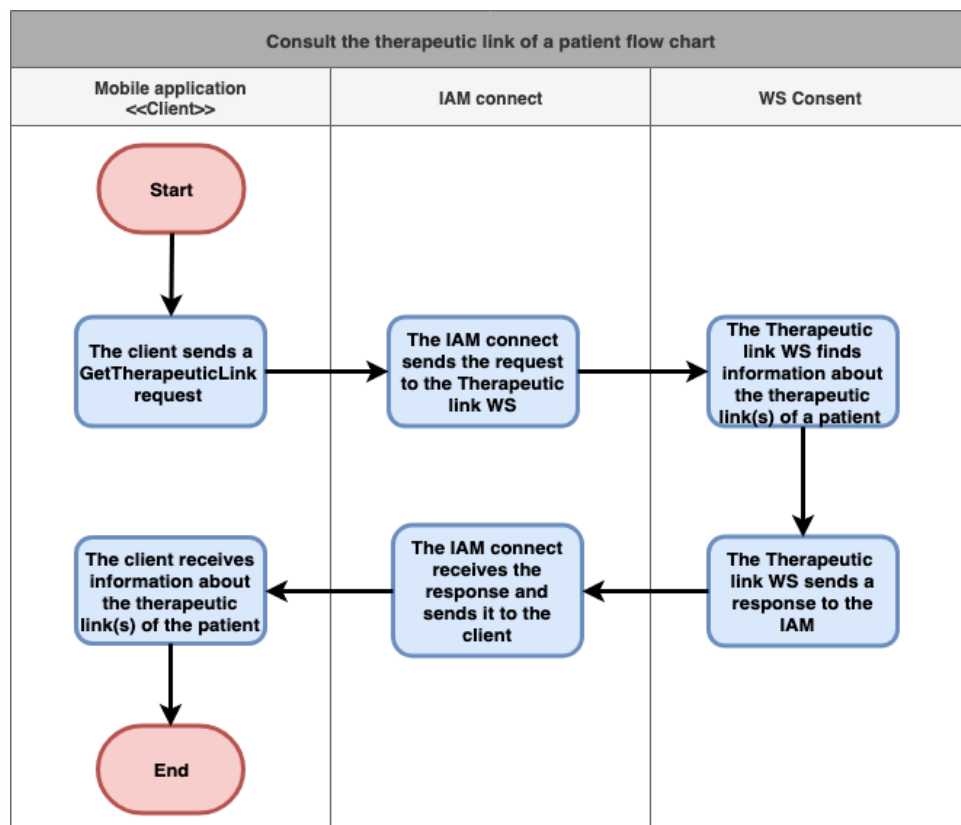
- The "GetTherapeuticLink" method allows an end-user to consult the therapeutic links list of a given patient. Indeed, it enables to check the existence of a given therapeutic link between a patient and a HCP.

The "GetTherapeuticLink" method allows users to check the existence of therapeutic links between a HC party and a patient. Depending on the input parameters the service can support the following functionalities:

- check the existence of a specific link between a patient and a HC party;
- consult the list of therapeutic links related to a patient;
- consult the list of therapeutic links between given HC party and given patient over a certain time period.

## Basic flow

Flow	Specification
	<b>U s e c a s e ID</b> <p>ATH-UC-14-BF</p>
	<b>U s e c a s e n a m e</b> <p>Consult the therapeutic links of a patient</p>
	<b>A c t o r s</b> <ul style="list-style-type: none"> <li>• Citizen</li> <li>• HC party</li> </ul>
	<b>S h o r t D e s c r i p t i o n</b> <p>In order to consult the therapeutic links of a patient using the SOA-based version, it is important to use the Token exchange service in order to convert a JWT token into a SAML one (and vice versa).</p>
	<b>P r i o r i t y</b> <p>1 (High)</p> <p>Must have: The system must implement this goal/assumption to be accepted.</p>



# P r e - C o n d i t i o n s

- The user is already logged in via the Token exchange service
- Information about the request (request identifier, end-user identifier, date and time of the request, the number of the therapeutic links to consult ( $\leq 1000$ ))
- A set of criteria relative to the therapeutic links
  - SSIN of the concerned patient
  - Optionally, identification of the concerned HCP
    - if the HCP is a professional: SSIN, NIHI number (11 digits), the HCP category, the first and last name
    - if the HCP is an organization: NIHI number (8 digits), the HCP category, the name of the organization
  - Optionally, the list of therapeutic link type
  - Optionally, the time period [begin date - end date]
  - Optionally, the status of the consulted therapeutic link: active, inactive, all
- Information about the evidence (Mandatory if the consultation is referral or historic)
  - Type of the proof
  - only if the type of proof is the reading of the eID card with PIN code entering, the binary proof including the encryption method (mandatory) and the binary value (mandatory).

# P o s t - C o n d i t i o n s

- Information about the response (response identifier, end-user identifier, data and time of the response, initial request)
- An acknowledgement about the request completion (status of the completion, errors if exist)

- A list of the therapeutic links fulfilling the criteria:
  - if the HCP is provided in the request
    - if the HCP is a professional identified by his /her SSIN and his/her category: all the therapeutic links containing the given SSIN - category are returned;
    - if the HCP is a professional identified by his /her NIHII and his/her category: all the therapeutic links containing the given NIHII - category are returned;
    - if the HCP is a professional identified by his /her SSIN, his /her NIHII and his/her category: all therapeutic links containing the given SSIN - NIHII - category are returned;
    - if the HCP is an organization identified by its NIHII and its category: all the therapeutic links containing the given NIHII - category are returned.
  - if the HCP is not provided in the request

- if the proof is not given
  - if the end-user of the request acts as a HC professional: the therapeutic links of the concerned patient and the concerned author are returned;
  - if the end-user of the request acts for an organization: the therapeutic links of the concerned patient and the concerned HC organization of the end-user are returned.

- if the proof is given
  - if the end-user of the request acts as a HC professional: the therapeutic links of the concerned patient and the concerned end-user, the therapeutic links of the concerned patient and other concerned HCP are returned;
  - if the end-user of the request acts for a HC organization: the therapeutic links of the concerned patient and the concerned organization, the therapeutic links of the concerned patient and other concerned HC parties are returned.

- If a (list of) therapeutic link type is provided: the therapeutic link(s) matching this (these) type(s) are returned
- If a time period is provided: the list of therapeutic links found over this given time period
- If a status (i.e. 'active', 'inactive', 'all') is provided: the therapeutic link matching the provided status are returned.

<b>S t e p s ( b a s i c f l o w)</b>	1	The client sends a GetTherapeuticLink request
	2	The IAM connect sends the request to the Therapeutic link WS
	3	The Therapeutic link WS finds information about the therapeutic link(s) of a patient
	4	The Therapeutic link WS sends a response to the IAM
	5	The IAM connect receives the response and sends it to the client
	6	The client receives information about the therapeutic link(s) of the patient
<b>E x c e p t i o n s (e x c e p t i o n f l o w s)</b>		
		<ul style="list-style-type: none"> <li>• Every time the end-user wants to consult the therapeutic link(s) of a given patient</li> </ul>