

Total Commander

Description

This page contains information on how to use Total Commander with EVS. This guide is relevant for all users and all versions of EVS. Before reading, it would be advised to read the latest EVS manual.

- [Description](#)
- [Introduction](#)
- [Installation](#)
- [Configuration](#)
- [How to use Total Commander](#)
- [Extras](#)
 - [Create new start menu item: Create Trigger](#)

Introduction

Total Commander is a file manager for **Windows**. It's a program like Windows Explorer to copy, move or delete files. However, Total Commander can do much more than Explorer, e.g. put two file windows side by side, Tabbed interface, pack and unpack files, access ftp servers, etc. You can find an overview of all Total Commander features and functions on their [features](#) page.

Installation

Go to the [Total Commander](#) website and click in the menu on the left on [Download](#).

Choose the correct version for your windows operating system (32-bit or 64-bit).



Total Commander

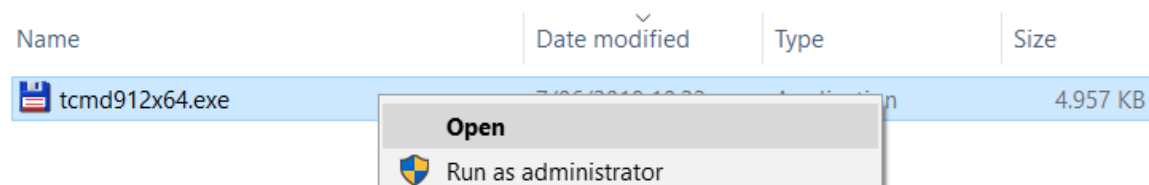
Download version 9.12 of Total Commander
(fully functional Shareware version, 4.1MB EXE file):

Direct download (RECOMMENDED):

- [32-bit version only](#) (Windows 95 up to Windows 10, runs on 32-bit AND 64-bit machines!)
- [64-bit version only](#) (Windows XP up to Windows 10, runs ONLY on 64-bit machines!)
- [64-bit+32-bit combined download](#) (Windows 95 up to Windows 10, 32-bit AND 64-bit machines!)

Insecure downloads via [http](#): [32-bit](#) | [64-bit](#) | [64-bit+32-bit combined](#)

When it's downloaded, run the executable.

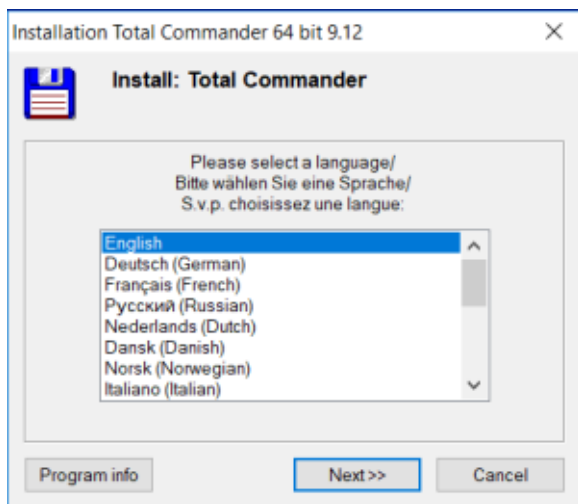


Name	Date modified	Type	Size
tcmd912x64.exe	7/25/2019 18:22	Application	4.957 KB

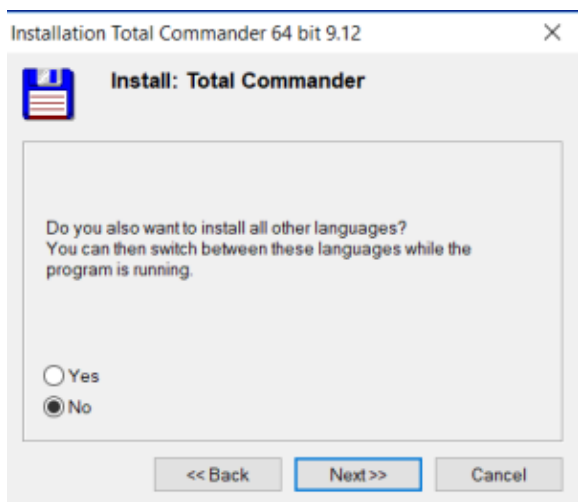
Open

Run as administrator

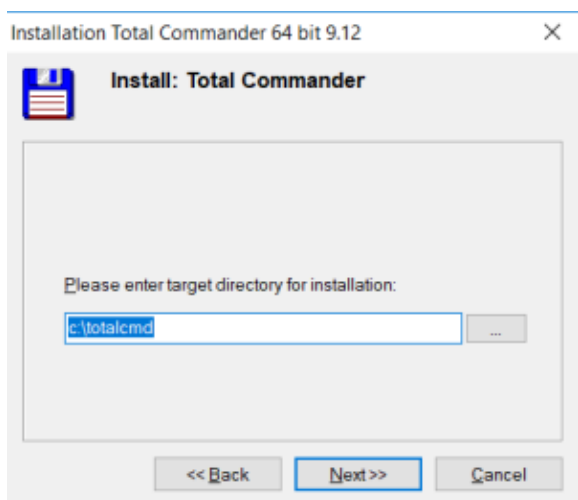
Select your preferred language and click **Next**.



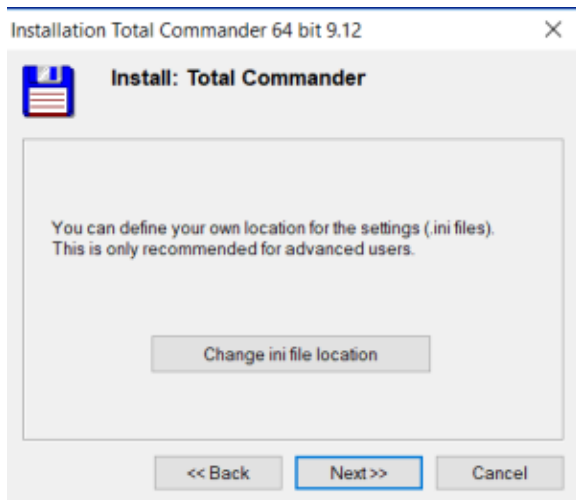
Choose if you want all languages or just the one you selected and click on **Next**.



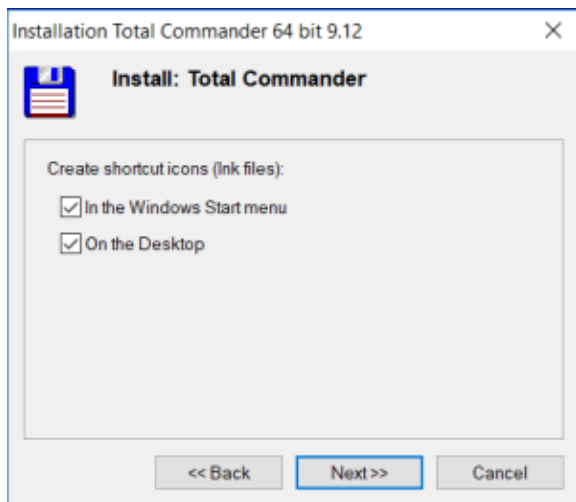
Choose an installation location and click on **Next**.



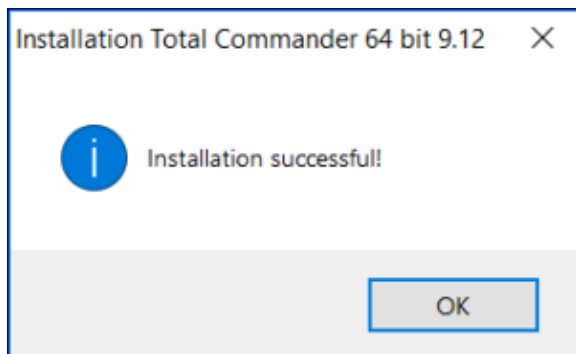
Click **Next**.



Click **Next**.



Click **OK**.

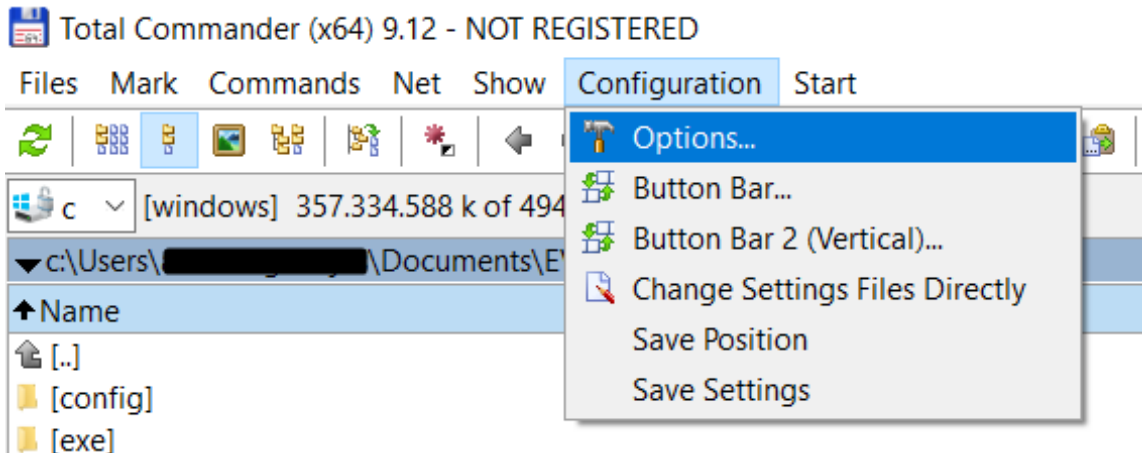


Total Commander is now successfully installed.

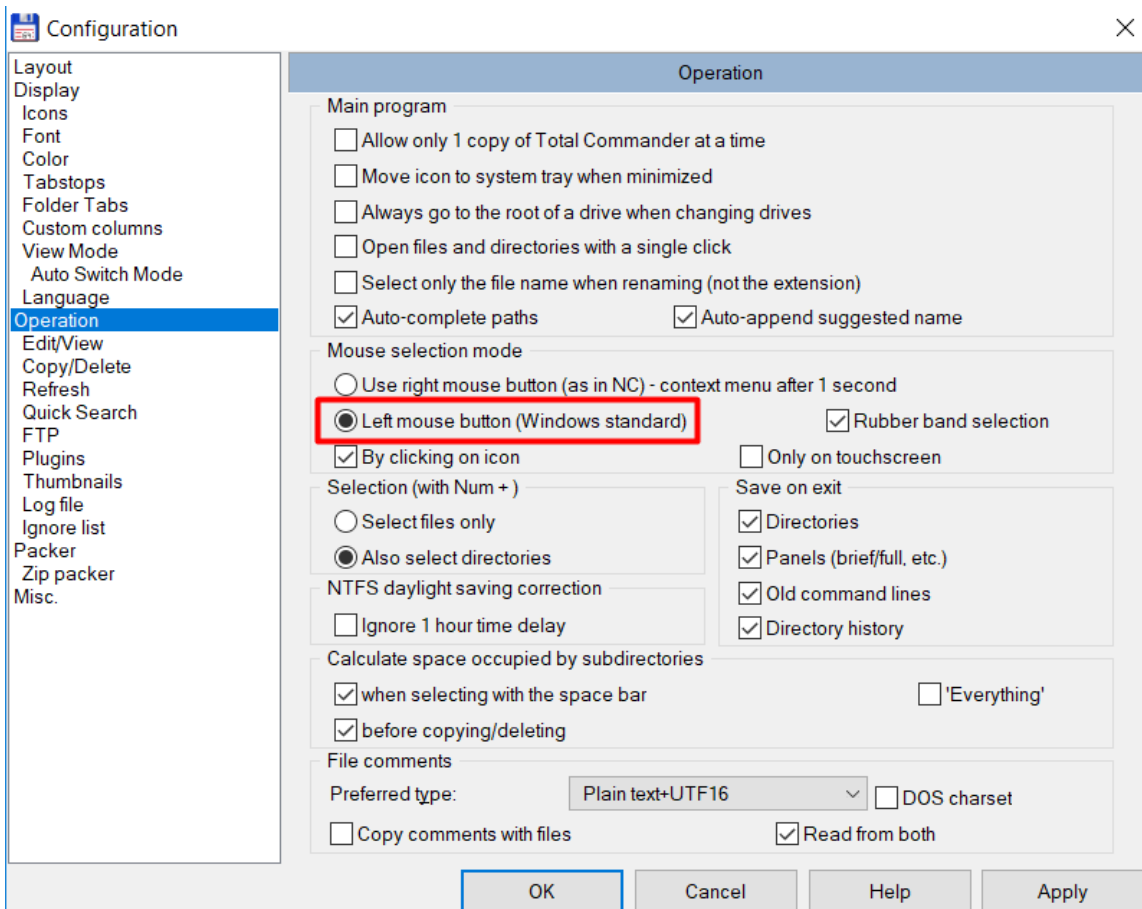
Configuration

The purpose of this section is to help you configure some useful settings in Total Commander.

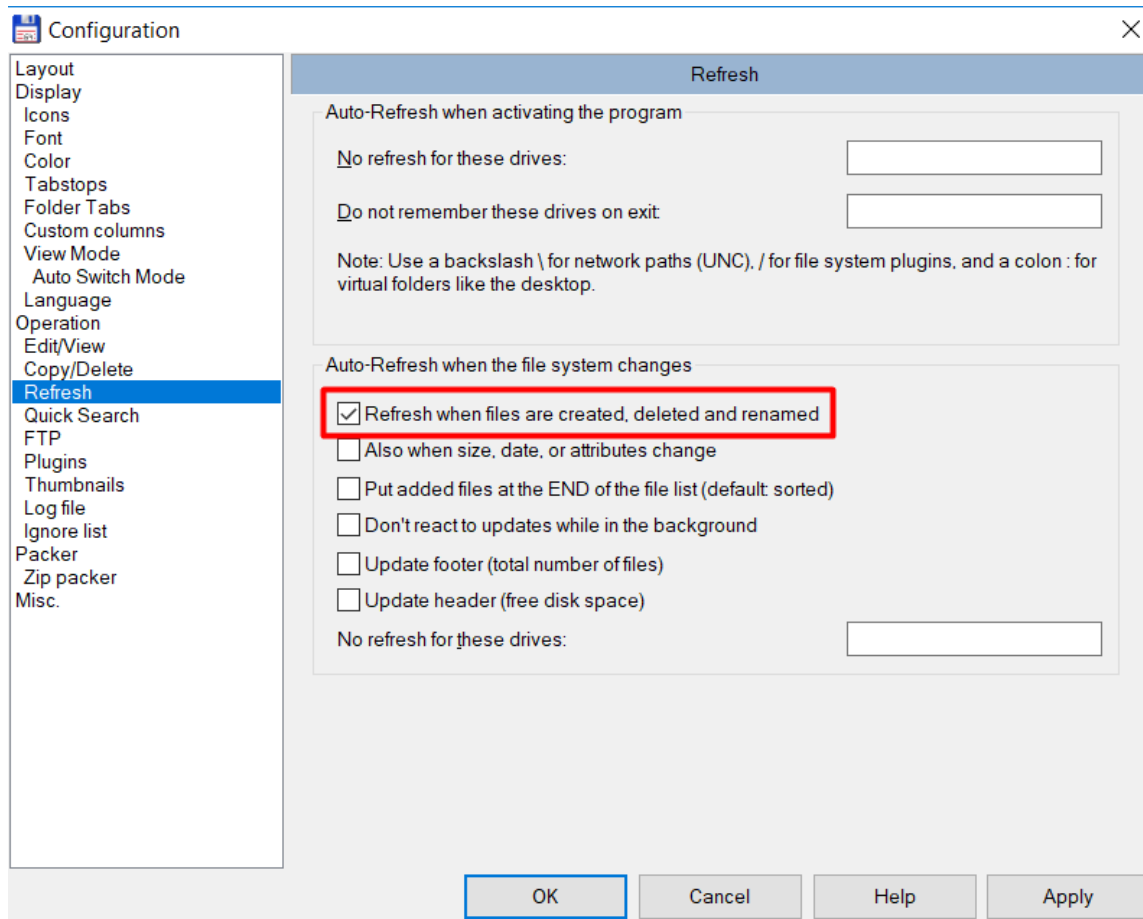
Open Total Commander and go to Configuration > Options.



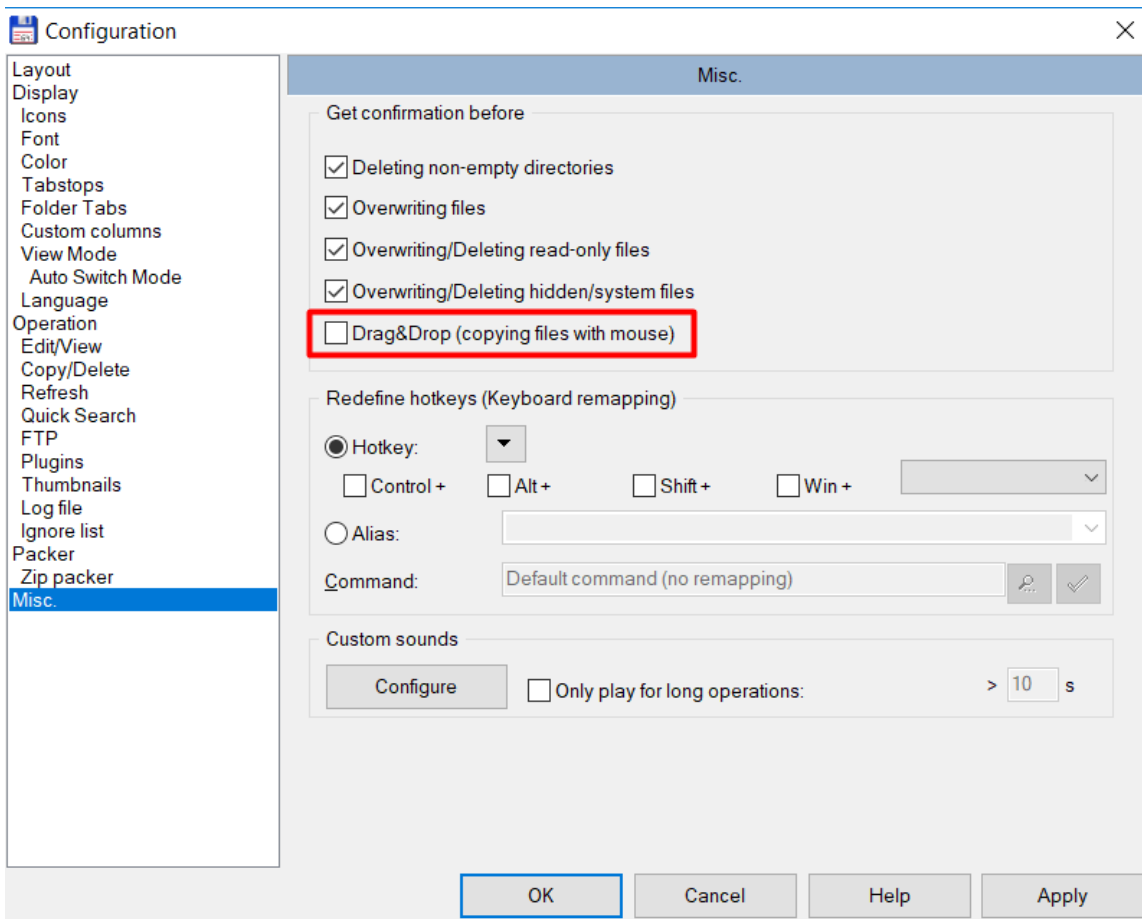
Click in the menu on **Operation** and select **Left mouse button (Windows standard)**. This will enable you to right-click files/folders in Total Commander.



Click in the menu on **Refresh** and check **Refresh when files are created, deleted and renamed**.
This refreshes Total Commander automatically, instead of having to switch folders to be able to see changes.



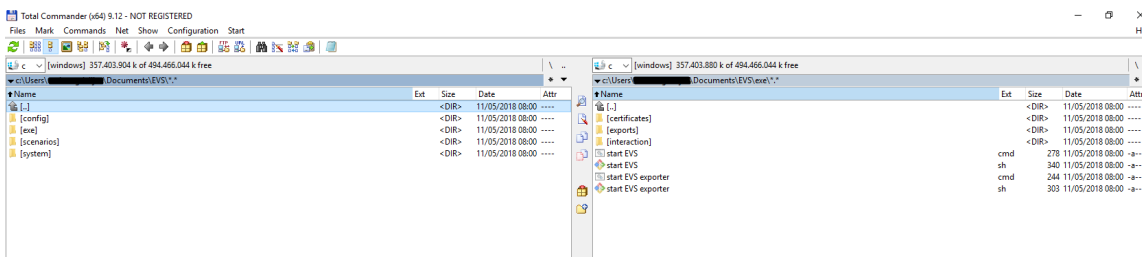
Click on **Misc.** and uncheck **Drag&Drop (copying files with mouse)**.
This will make it so you don't get a confirmation screen every time you copy a file.



When you are done, click on **Apply** and then **OK**.

How to use Total Commander

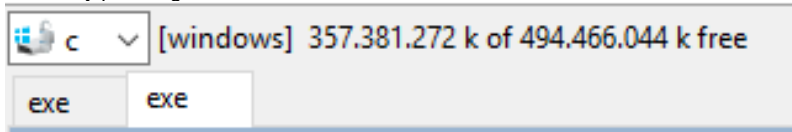
When you first open Total Commander you can see two file windows side by side. it will look something like this:



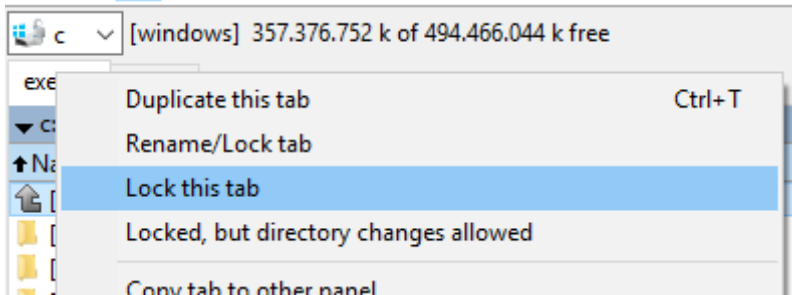
To make working with EVS easier and faster, you can create tabbed interfaces.

Creating a tabbed interface goes as follows:

- Create a new tab by pressing Ctrl + T.



- Browse to a folder in EVS, e.g. the "exe" folder.
- Right-click on the tab of the exe folder and select **Lock this tab**.



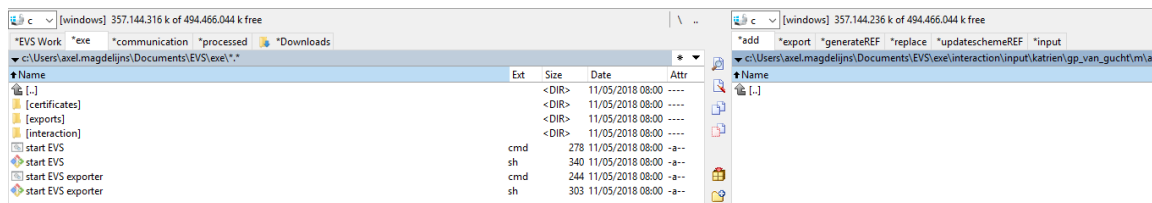
Locked tabs are marked with a *.

When you try to change folder in a locked tab it will result in Total Commander opening a new tab and the locked tab stays the same.

✔ To delete a tab, press Ctrl + W.

Repeat this process until you have a useful tab structure.

An example of a tab structure:



An explanation of some of the tabs:

- EVS Work: A folder not in EVS where you edit your own XML-files.
- exe: To be able to start EVS easily.
- Downloads: Where usually you're downloaded XML-files will end up.
- On the right (add, export, generateREF, replace, updateschemeREF): actions where XML-files will end up. for the path of these folders you can pick your most used patient and actor.

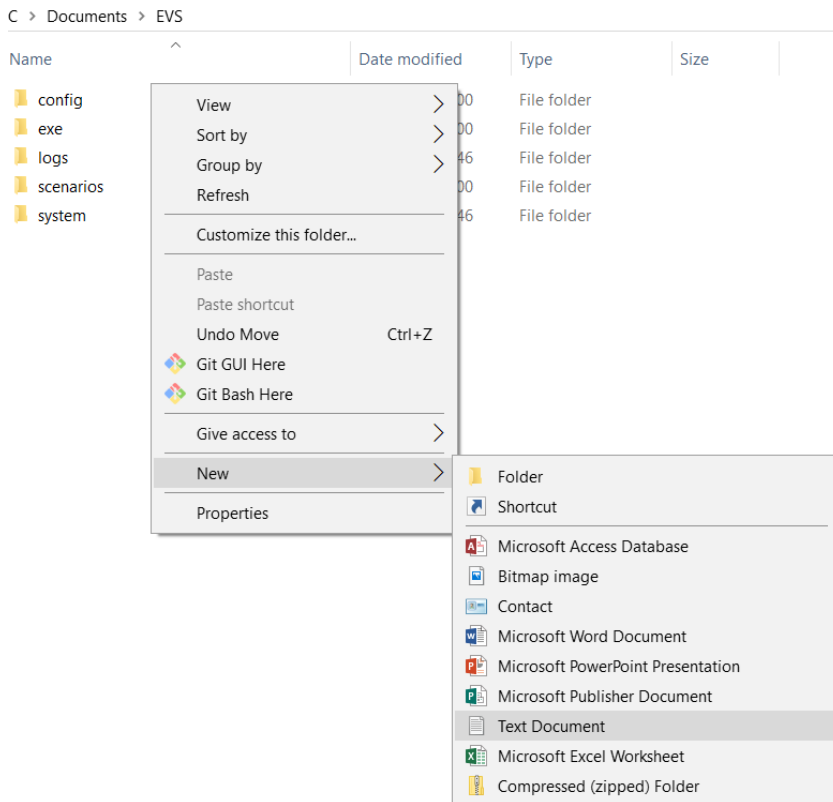
Now you can pick a downloaded or edited XML-file from the left and drag it on the right in the correct actions folder.

Extras

Create new start menu item: Create Trigger

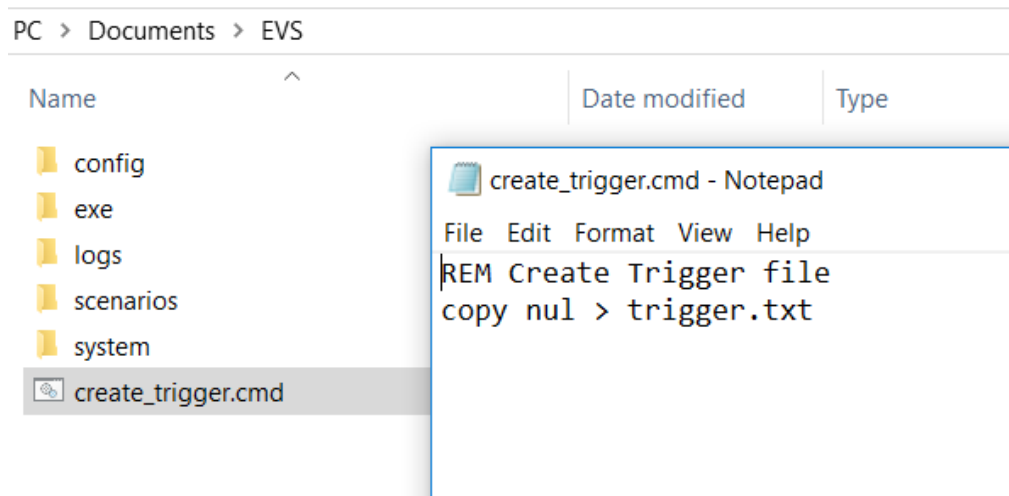
The start menu item "Create Trigger" will be used to quickly export an empty txt-file to EVS.

Browse to the EVS folder and create a new text document.

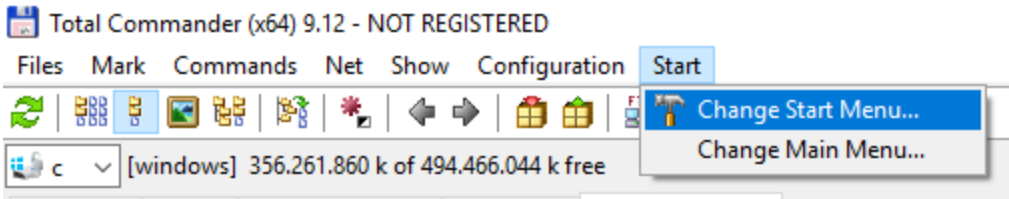


Name this document "create_trigger.cmd".
 Right-click on the file and select "edit". The file will be empty.
 Add the following to the file:

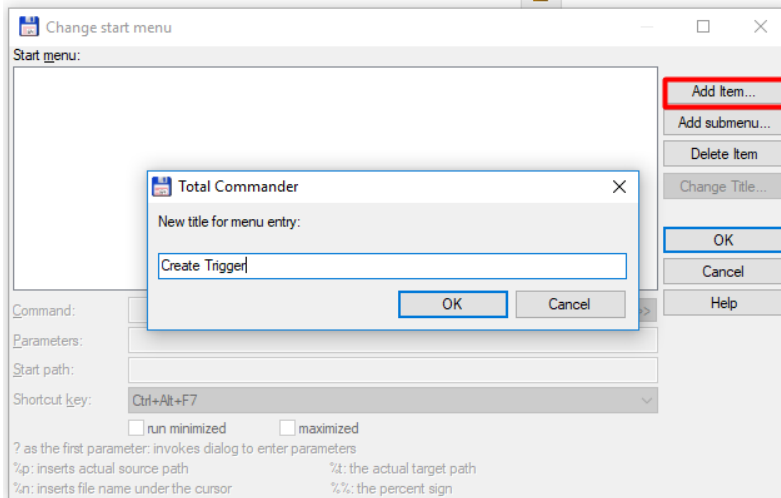
```
REM Create Trigger file
copy nul > trigger.txt
```



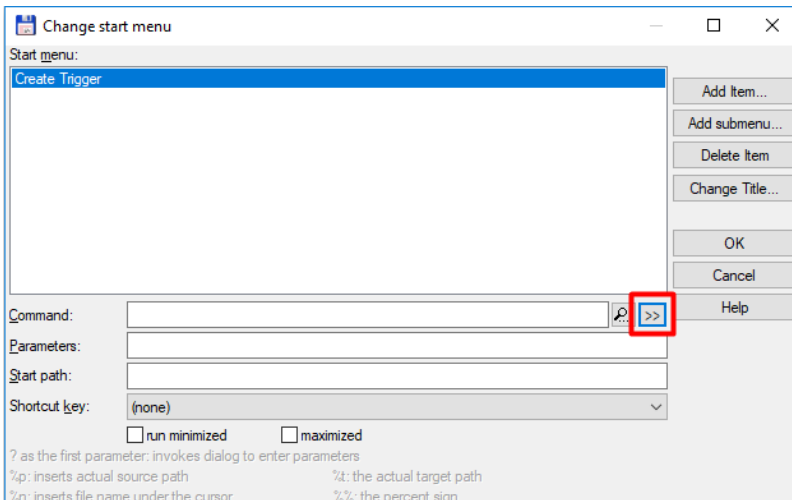
Go back into Total Commander and click in the navigation bar on **Start > Change Start Menu...**



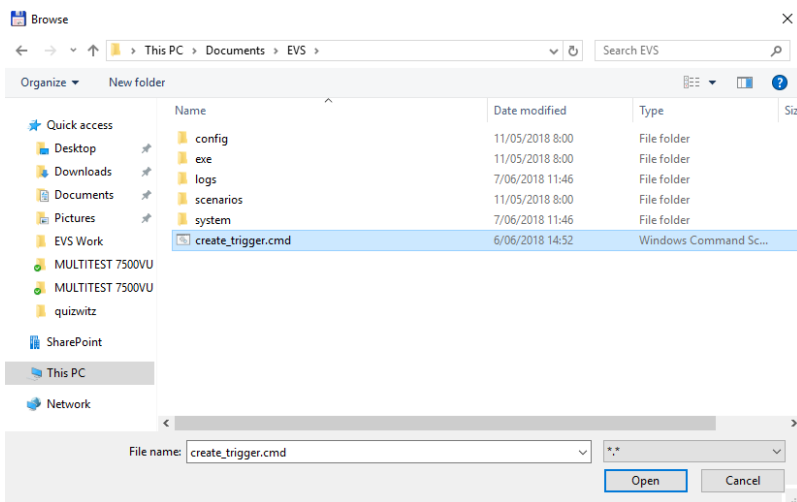
Click on **Add Item...** and name it "Create Trigger".



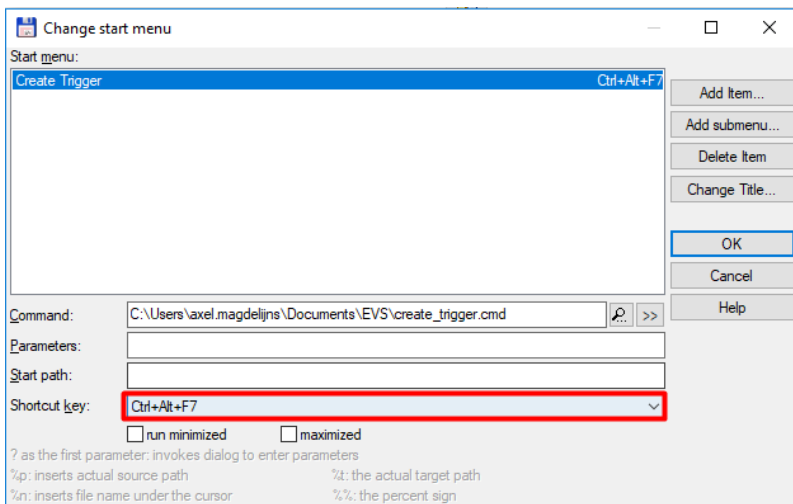
Click on the double arrows marked in the image below.



Select the create_trigger.cmd file you just created and click **Open**.



Pick a shortcut key from the drop down list, e.g. Ctrl + Alt + 7.



Now when you go to the navigation bar and click on **Start**, you can see the new start menu item you just created.

